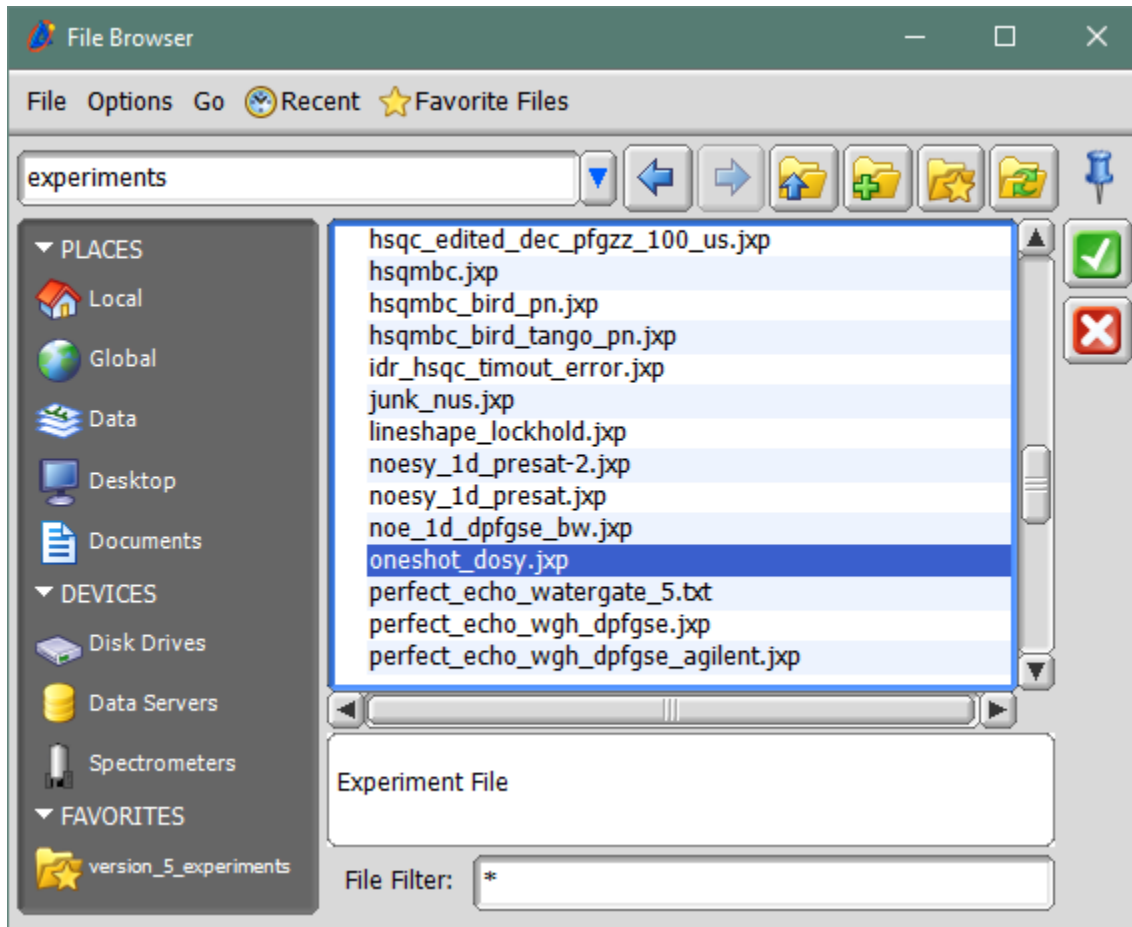


## Upload Experiment file to spectrometer

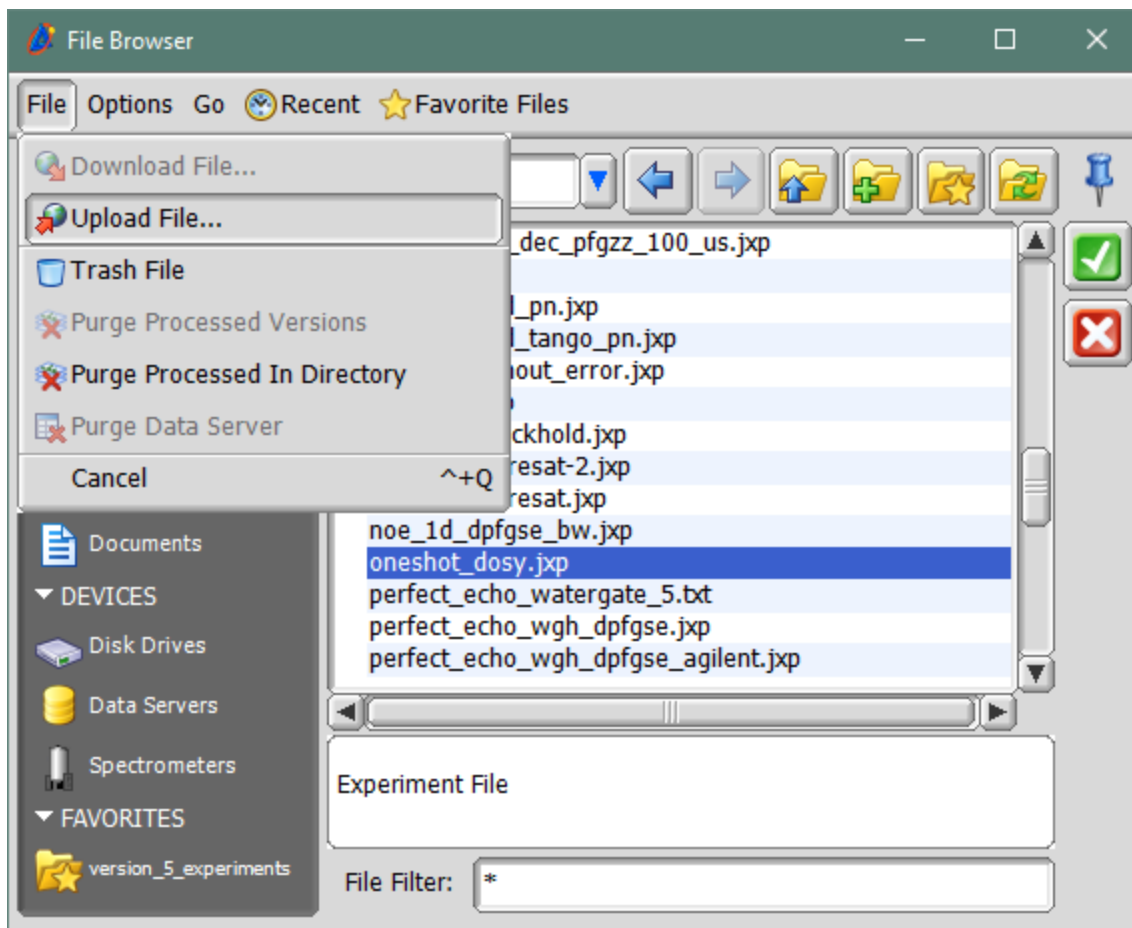
Experiments **cannot** be placed manually on the spectrometer. Even though they are in the expected location they will not appear in the “Experiment File Browser” in Delta as the displayed listing is from a database, not from the physical location of files.

Disconnect from the Spectrometer before the following operation is performed.

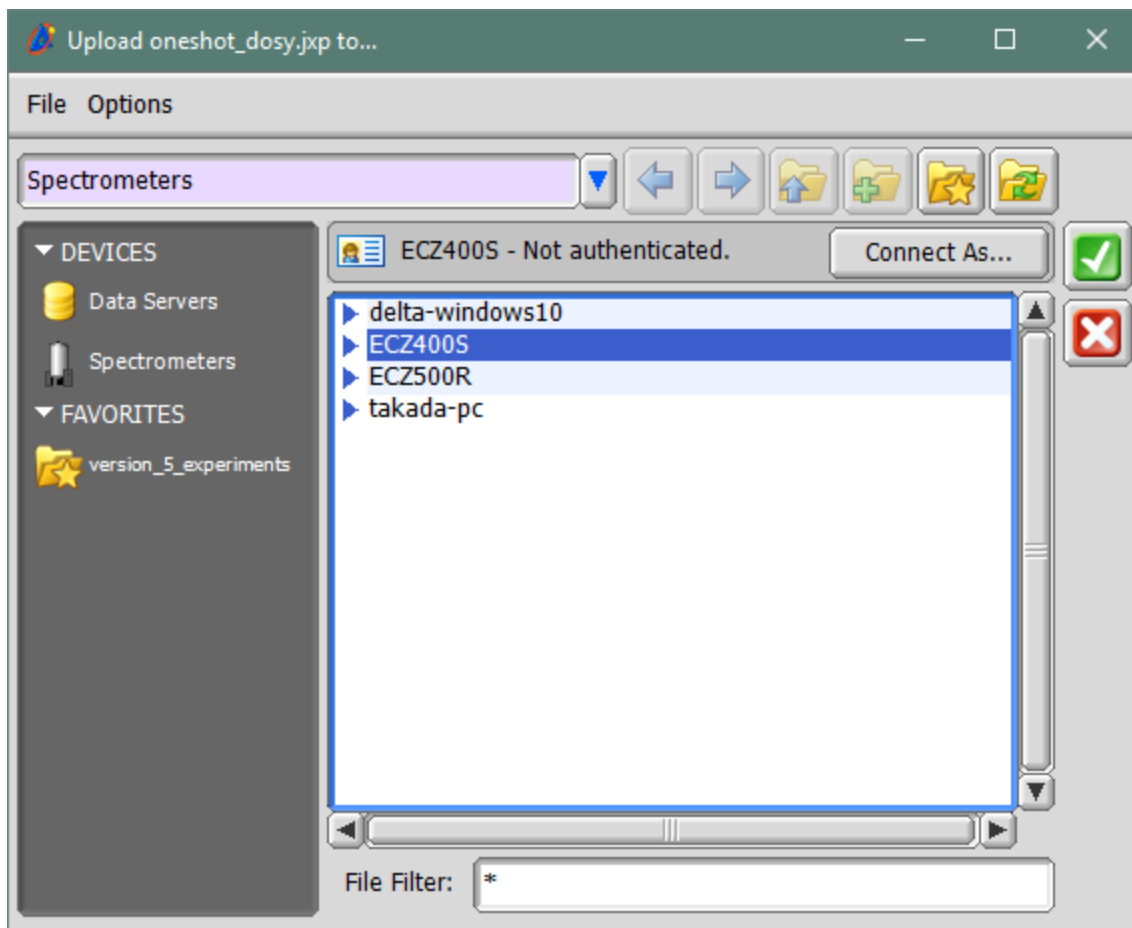
Navigate to the location of the local experiment on the workstation. The extension for experiment files is “JXP”. Select the experiment file to be uploaded. In this example “oneshot\_dosy.jxp” is being uploaded.



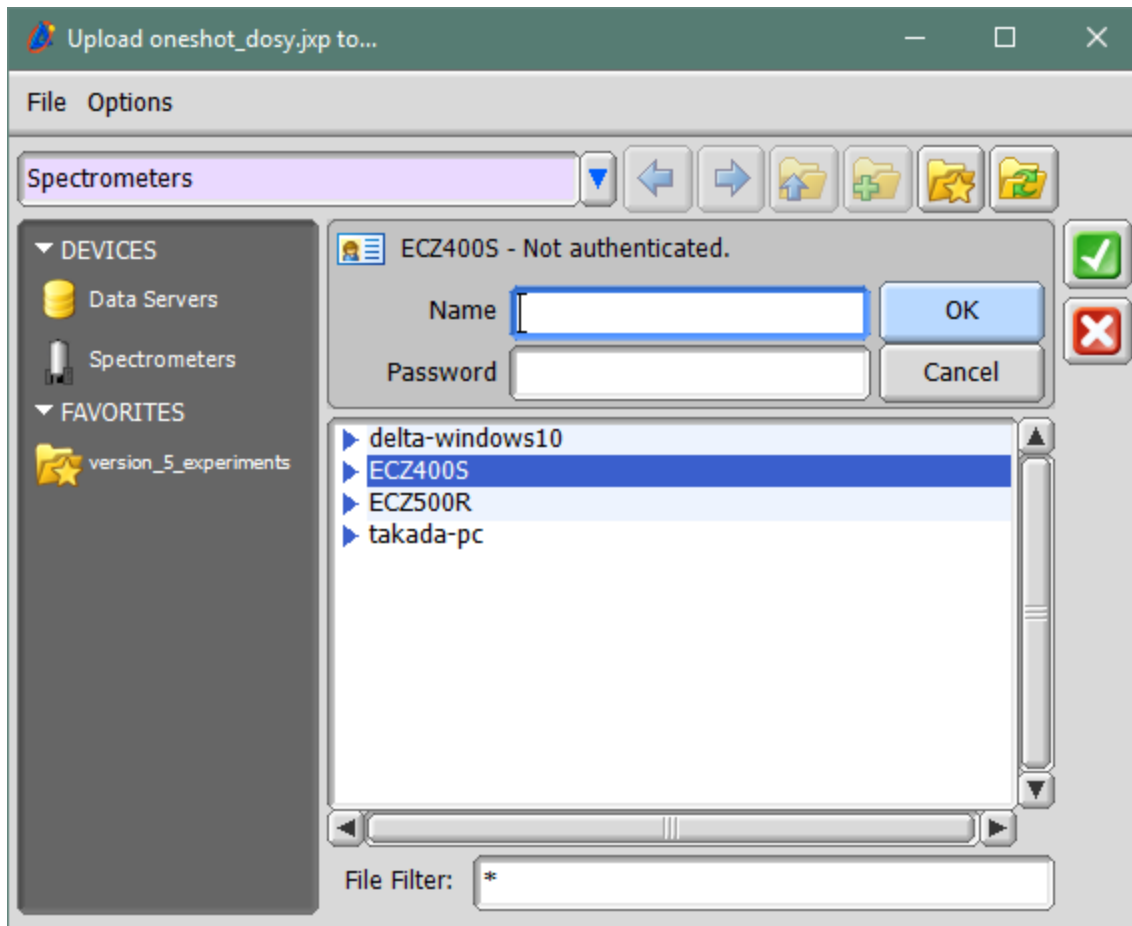
From the “File” menu select “Upload File”



A new window displaying available spectrometers will appear. Select the spectrometer to which the file needs to be uploaded to.



Click on "Connect As...".

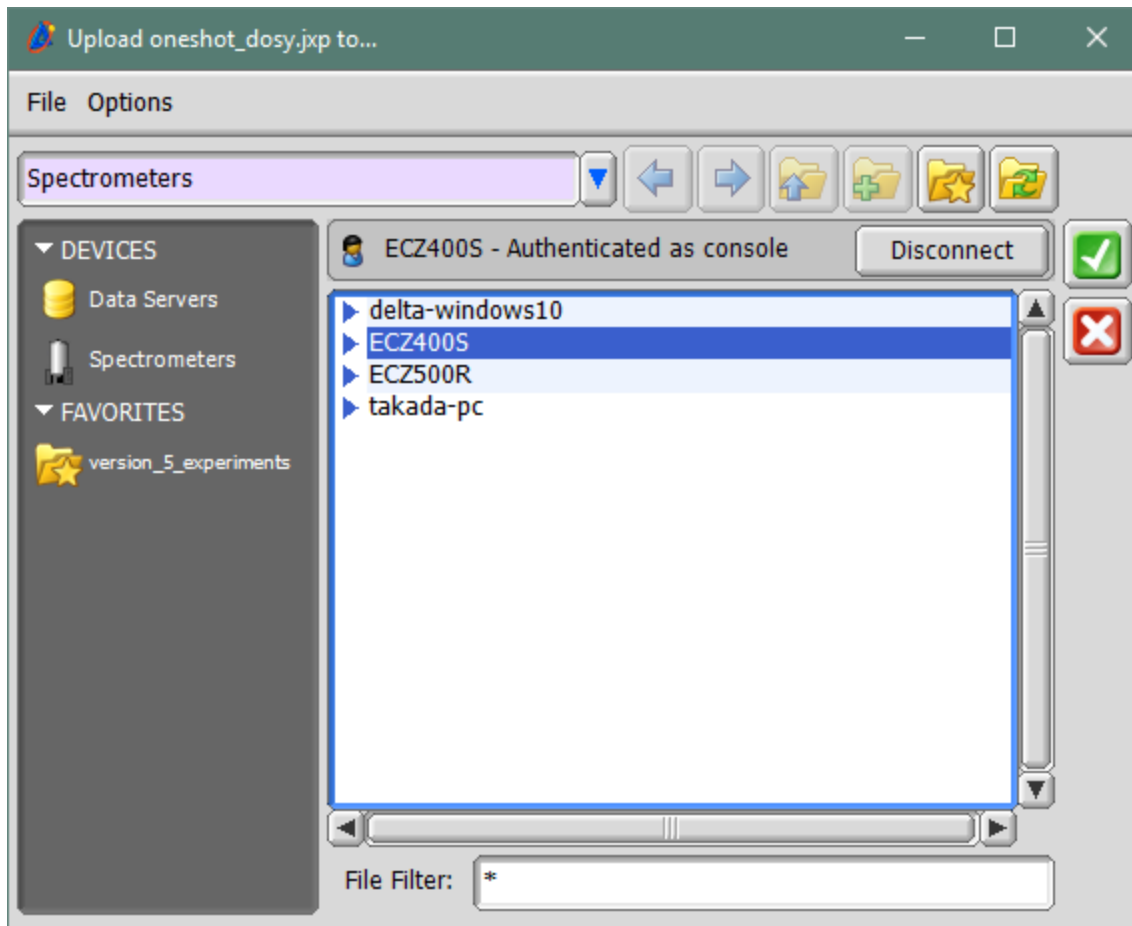


Enter

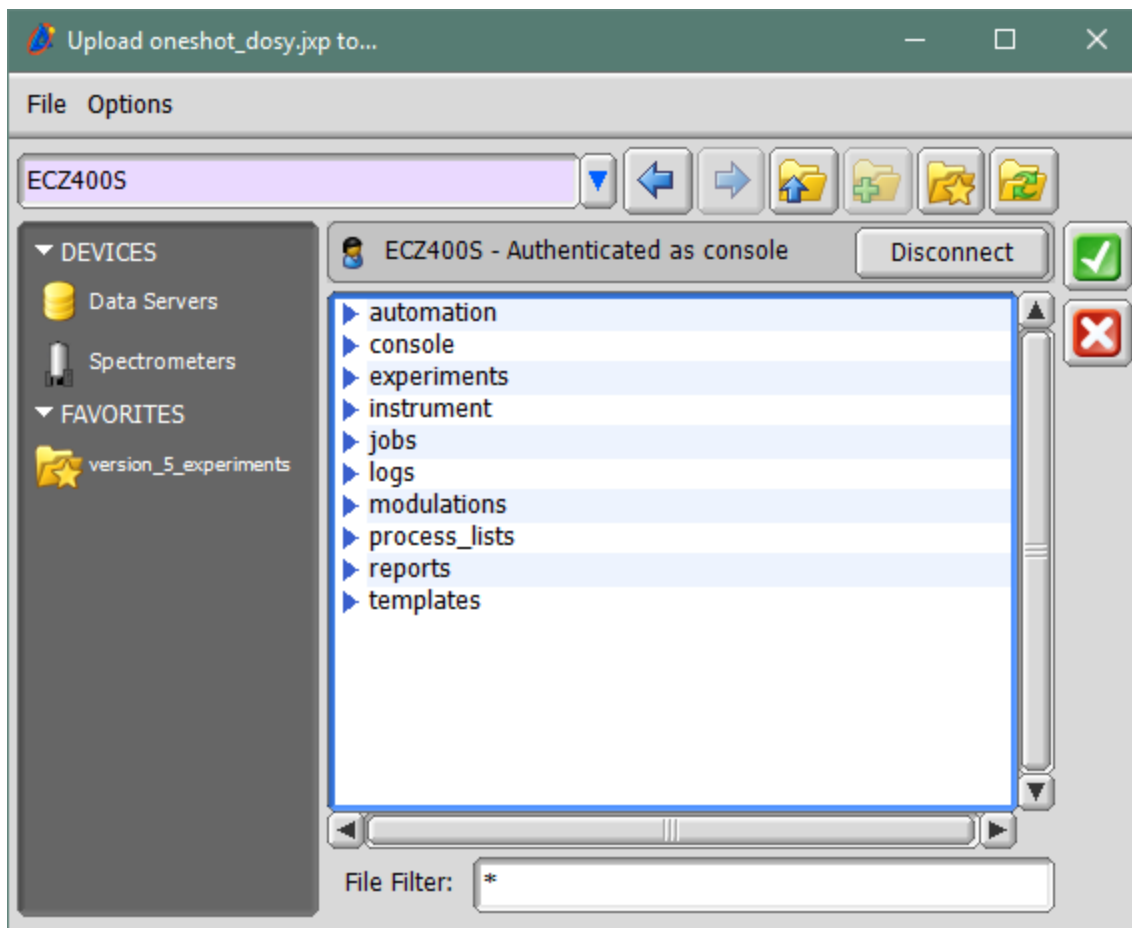
Name: console

Password: console (**Note: If the password has been changed, enter the current password for user "console"**).

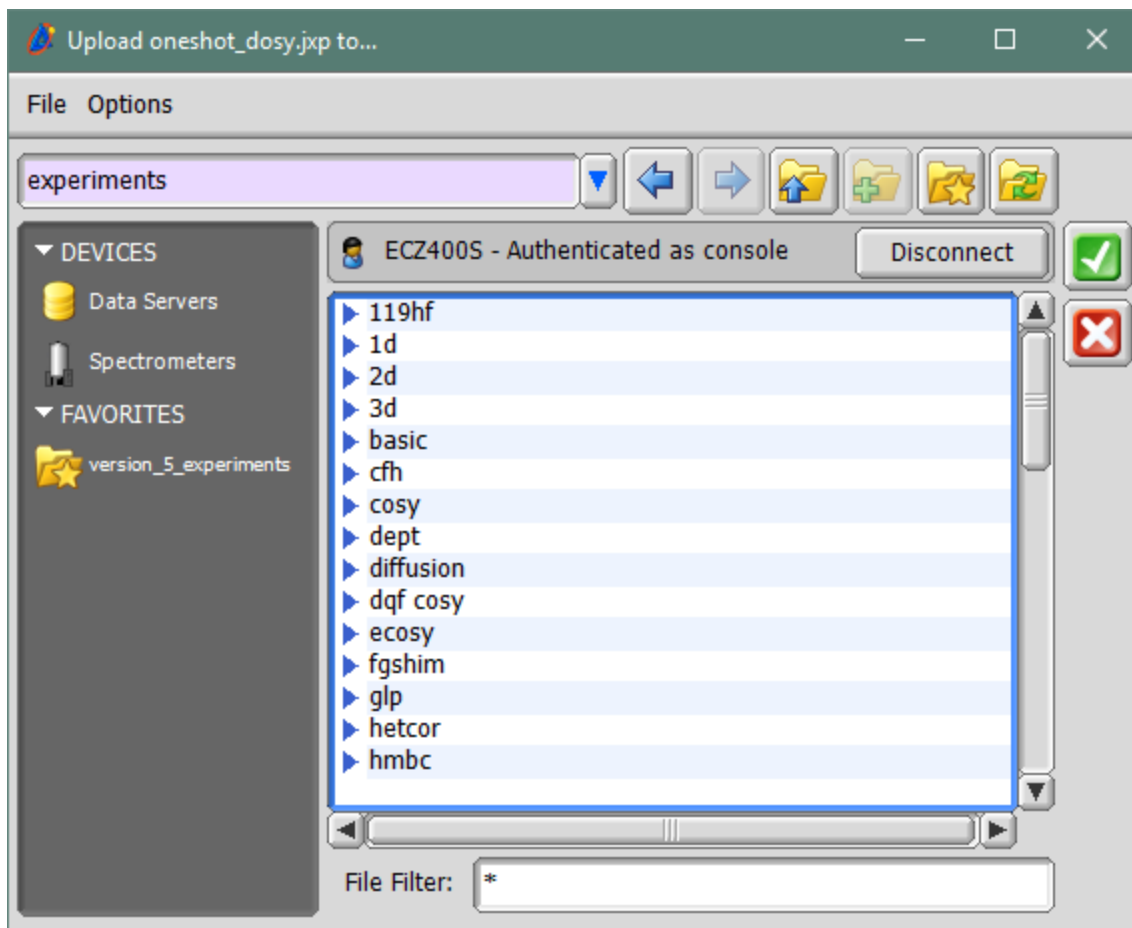
Hit the "OK" button.




Double click on the "Authenticated" spectrometer to display the sub folders.



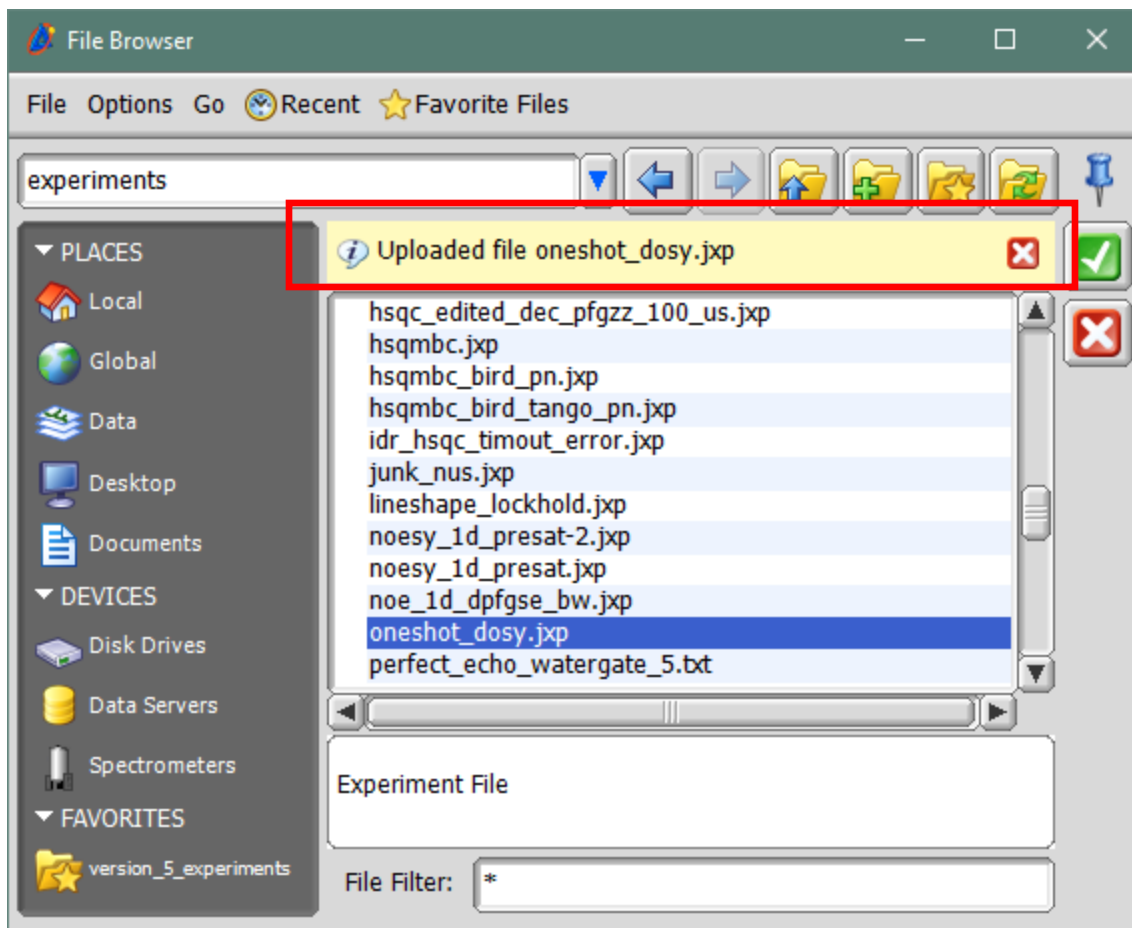
Double click on the "Experiments" directory.



Hit the  button to upload the file.

The window open to the spectrometer will close.

Make sure that the message below (red outline) is displayed to confirm that the file uploaded successfully.



Now the Experiment will be available when requested from within the Delta Application.