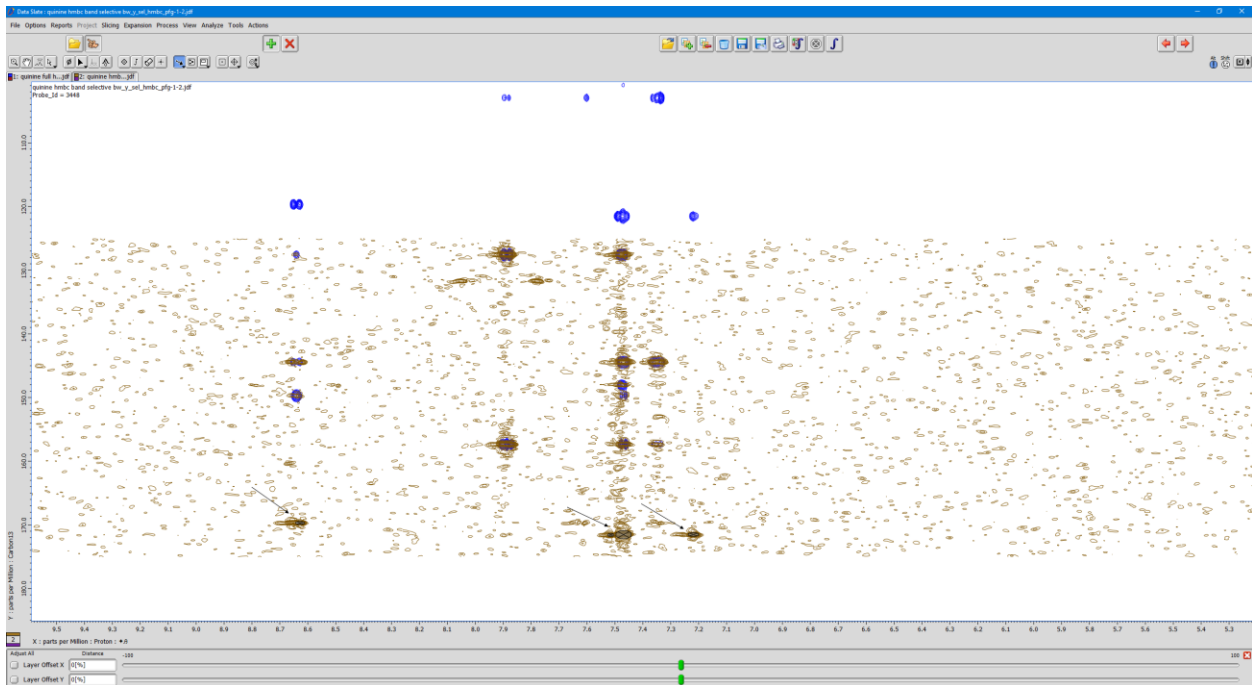


Peak pick the fold over peaks.



From the Analyze menu, call up the Peak Spreadsheet tool.

Spread Sheet

Edit Cell

X	Y	X Fold	Y Fold	Class	Normal
[ppm]	[ppm]				
8.628	169.703	0	0	SM	1.4
7.515	171.583	0	0	SM	0.8
7.469	171.534	0	0	SM	11.1
7.219	171.510	0	0	SM	2.3

quinine hmbc band selec

Select any cell in the Y Fold column

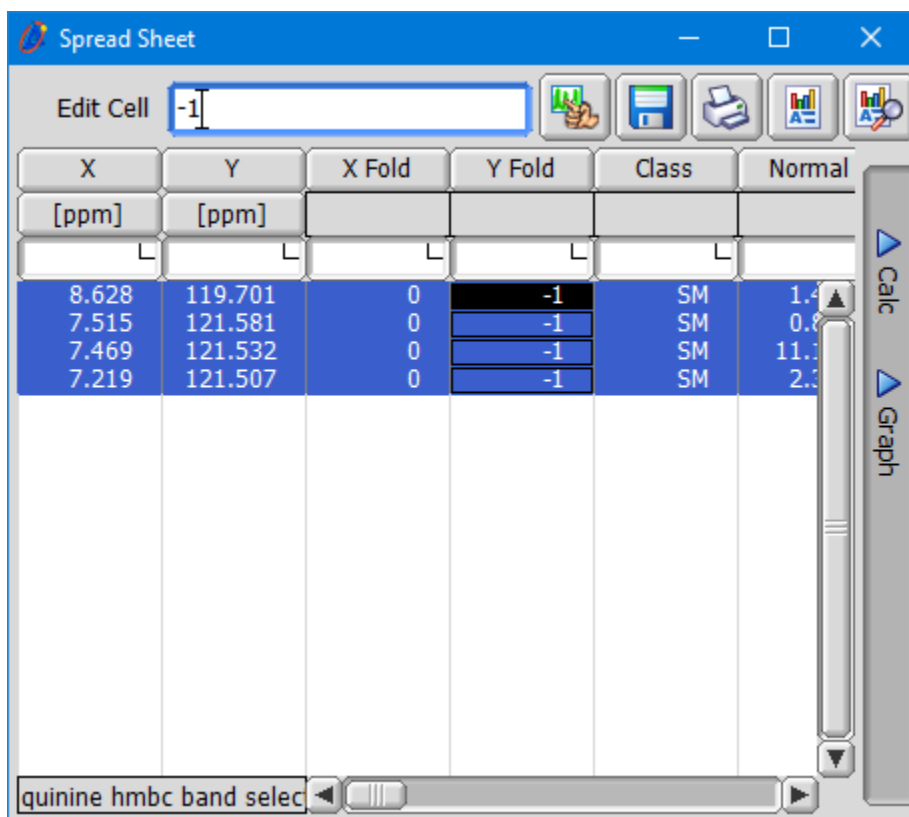
Spread Sheet

Edit Cell 0

X	Y	X Fold	Y Fold	Class	Normal
[ppm]	[ppm]				
8.628	169.703	0	0	SM	1.4
7.515	171.583	0	0	SM	0.8
7.469	171.534	0	0	SM	11.1
7.219	171.510	0	0	SM	2.3

quinine hmbc band selec

In the  box enter -1



Delta will display the corrected chemical shifts for the folded peaks.

Y
[ppm]
119.701
121.581
121.532
121.507